

# Clinical results

Courtesy of Dr VIGOUROUX, Bordeaux Hospital, France.



Before treatment



With F.L.A.G.™ for B.LED



Final result

## Advantages

For the practitioner

- 1 Visual aid to facilitate the diagnosis and guide the clinical care
- 2 Treatment optimization by focusing on affected areas and avoiding overuse of instruments
- 3 Improvement of clinical treatment quality
- 4 Time and profitability saving

For the patient

- 1 More comfort through a shorter treatment
- 2 Education and motivation for oral hygiene

Non contractual document - Ref : D62201 - V3 - 01/2014 - Copyright © 2014 SATELEC. All rights reserved. No information or part of this document may be reproduced or transmitted in any form or by any means without the prior permission of SATELEC. Courtesy of Dr VIGOUROUX, Bordeaux, France.

# Discover how to simultaneously detect and remove dental plaque

# F.L.A.G.

FOR **B.LED**

## OPERATING PROTOCOL

English

# F.L.A.G.™ for B.LED plaque discloser

F.L.A.G.™ for B.LED is a fluorescent disclosing liquid with fluorescein that targets active bacteria on dental plaque.



**F.L.A.G.**  
FOR B.LED



Once fixed on dental plaque, F.L.A.G.™ for B.LED becomes fluorescent under the blue light of the NEWTRON® SLIM B.LED handpiece: this is B.LED technology.

Scaling and debridement procedures are facilitated and treatment is optimized.

F.L.A.G.™ for B.LED is available in a kit containing 5 single-dose bottles of 1.5 ml, 5 brushes and 1 pipette (Ref. F62200) or in a 100 ml bottle with a dosing syringe and 15 single-use brushes (Ref. F62203).

## Operating protocol

### 1 Target dental plaque with the dental plaque discloser F.L.A.G.™ for B.LED

→ Two types of use :

Brush mode



Direct application on teeth

- Apply the discloser to all teeth surfaces with the disposable brush.
- Rinse lightly with water. The discloser remains fixed on areas covered with dental plaque.
- This application can be repeated during the scaling procedure.

\*F.L.A.G. : Fluorescent Liquid Assisted Guidance

Tank mode

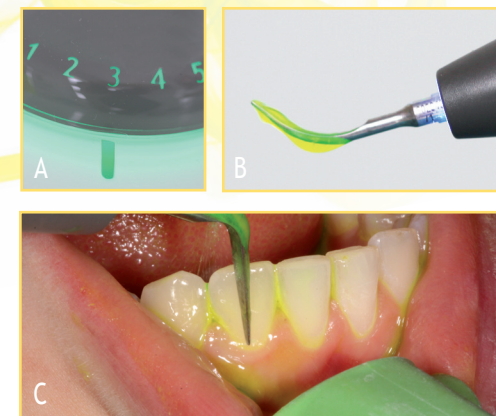


Dilution in the tank of NEWTRON® P5 XS

- Pour a 1.5 ml bottle of F.L.A.G.™ for B.LED directly into the 300 ml tank filled with water or pour two (2) 1.5 ml bottles for a 500 ml tank. If using the 100 ml bottle of F.L.A.G.™ for B.LED, draw the required amount from the bottle using the marks on the syringe according to the volume of your tank (300 ml or 500 ml).
- To empty the bottle, tap the bottom of the bottle over the tank or use the pipette provided.
- Once sprayed onto teeth, the solution will stay fixed specifically to areas covered with dental plaque throughout the procedure.

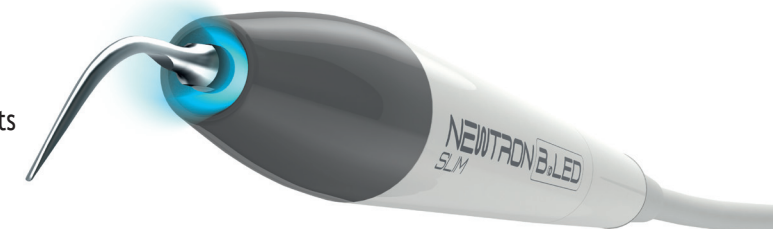
### 2 Set the irrigation flow rate

- Turn irrigation flow to 0 and power setting to 3 (A).
- Turn the handpiece so the tip is pointed upwards (B).
- Progressively adjust the irrigation in order to have droplets of water cooling the tip extremity (B).
- Set power as desired. If used in dilution in the tank, spray over the teeth and wait for 5 seconds.
- Begin the treatment with the aspiration close to the tip (C).



### 3 Reveal dental plaque by fluorescence with the blue light of the NEWTRON® SLIM B.LED handpiece

Only areas covered with dental plaque are revealed by the NEWTRON® SLIM B.LED handpiece light, resulting in a more targeted and rapid treatment and avoiding the overuse of instruments. Move or turn off the operatory light if necessary to get the best results with the blue light.



### 4 Eliminate dental plaque in a simultaneous, fast and complete way.

Begin your scaling and debridement procedures following the fluorescent zones. Another application of F.L.A.G.™ for B.LED after the care enables the practitioner to control and improve the treatment. A final rinse of the mouth will remove all yellow fluorescence.